

Table of Contents

765 kV

765 kV Table of Contents	567
Pictorial Index	569

Bus Supports

Type B6998 Series	571
Type B7107 Series	572
Type B7582-A Series	573
Type C7009 Series	574

Couplers

Type B7070 Series	575
Type 15400 Series	576

765 kV

Corona Bells

Type 34443, 34453 Series	577
--------------------------------	-----

Tee Connectors

Type BAC-EHV-AA	578
Type BCW-EHV-AA	579
Type B7568-A Series	580
Type B7071 Series	581
Type B7072 Series	582
Type B7095 Series	583
Type B7006 Series	584
Type B7875 Series	585
Type B7096-A Series	586
Type B7566, B7565 Series	587
Type B7876, B7882 Series	588
Type WT-EHV-AA	589
Type WRP2CA-20-EHV-AA, WRP2CA-45-EHV-AA	590

Terminal Connectors

Type WPC-4S4-AA-WH, WPCA-4S4-90-AA-WH	591
Type WPCA-20-AA-WH, WPCA-45-AA-WH, WPCA-75-AA-WH	592
Type WPCA-15L-AA-WH, WPCA-15R-AA-WH, WPCA-15L-20-AA-WH, WPCA-15R-20-AA-WH	593
Type B094, B7567 Series	594
Type B7001 Series	595
Type WP2CA-45-EHV-AA	596
Type B7583-A Series	597
Type B7878-A Series	598

Ground Stud

Type 34640-EHV Series	599
-----------------------------	-----

Spacer Clamps

Type C6999-A, B7073 Series	600
----------------------------------	-----

Vibration Damper

Type 1705, B7384 Series	601
-------------------------------	-----

Stud Connector

Type B7004-A Series	602
Type B7074-A Series	603
Type B7108-A Series	604
Type B7879-A, B7880 Series	605



765 kV Bus Supports	
	B6998 SERIES
	PG. 571
	B710 SERIES
	PG. 572
	B7582 SERIES
	PG. 573
	C7009 SERIES
	PG. 574
765 kV Couplers	
	B7070 SERIES
	PG. 575
	15400 SERIES
	PG. 576
765 kV Corona Bells	
	34433 SERIES
	PG. 577
	34453 SERIES
	PG. 577

765 kV Tee Connectors	
	BAC-EHV-AA
	PG. 578
	BCW-EHV-AA
	PG. 579
	B7568-A SERIES
	PG. 580
	B7071 SERIES
	PG. 581
	B7072 SERIES
	PG. 582
	B7095 SERIES
	PG. 583
	B7006 SERIES
	PG. 584
	B7875 SERIES
	PG. 585
	B7096-A SERIES
	PG. 586

	B7566 SERIES
	PG. 587
	B7565 SERIES
	PG. 587
	B7876 SERIES
	PG. 588
	B7882 SERIES
	PG. 588
	WT-EHV-AA
	PG. 589
	WRP2CA-20-EHV-AA
	PG. 590
	WRP2CA-45-EHV-AA
	PG. 590
765 kV Terminal Connectors	
	WPC-4S4-AA-WH
	PG. 591
	WPCA-4S4-90-AA-WH
	PG. 591

	WPCA-20-AA-WH
	PG. 592
	WPCA-45-AA-WH
	PG. 592
	WPCA-75-AA-WH
	PG. 592
	WPCA-15L-AA-WH
	PG. 593
	WPCA-15R-AA-WH
	PG. 593
	WPCA-15R-20-AA-WH
	PG. 593
	WPCA-15L-20-AA-WH
	PG. 593
	B7094 SERIES
	PG. 594
	B7567 SERIES
	PG. 594
	B7001 SERIES
	PG. 595

	WP2CA-45-EHV-AA
	PG. 596
	B7583-A SERIES
	PG. 597
	B7878-A SERIES
	PG. 598
765 kV Ground Jumpers	
	34640-EHV SERIES
	PG. 599
765 kV Spacer Clamps	
	B7073 SERIES
	PG. 600
	C6999-A SERIES
	PG. 600
765 kV Vibration Dampers	
	1705 SERIES
	PG. 601
	B7384 SERIES
	PG. 601

765 kV Stud Connectors	
	B7004-A SERIES
	PG. 602
	B7074-A SERIES
	PG. 603
	B7108-A SERIES
	PG. 604
	B7879-A SERIES
	PG. 605
	B7880 SERIES
	PG. 605

DOSSERT® TYPE B6998 Series

Bolted Support, Slip or Fixed Fit

Recommended for Voltages Up to 765 kV

Support is designed to be corona free for 765 kV operation. Support can be supplied for fixed fit or slip fit applications. For slip fit application, stainless steel chatter springs are supplied. Aluminum mounting hardware is supplied as standard; galvanized steel can be furnished on request.

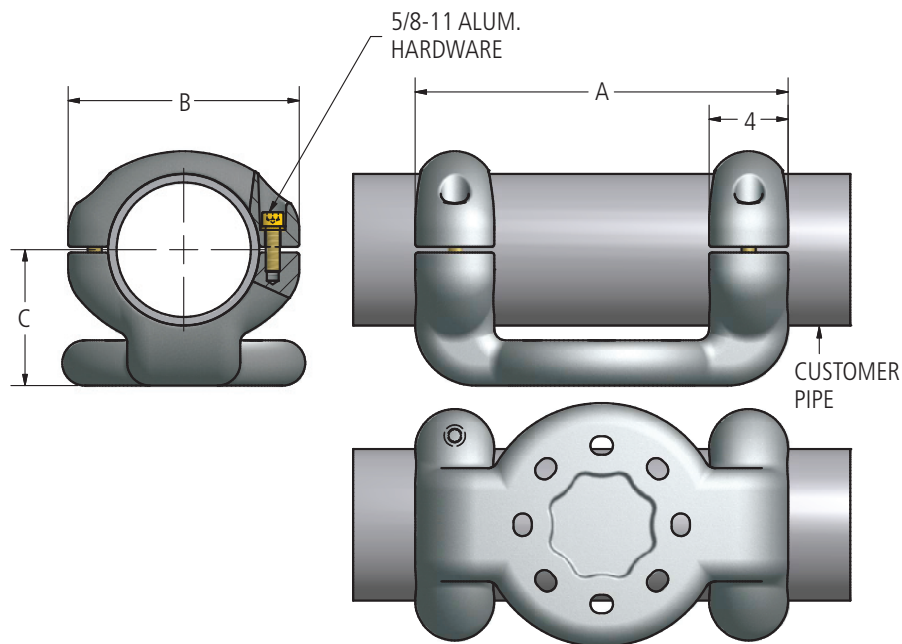


Material

Aluminum Alloy

Hardware

Yellow anodized aluminum bolts, nuts, and lockwashers.
Galvanized steel mounting hardware included.



Ordering Information

CATALOG NUMBERS	CONDUCTOR SIZE TUBULAR BUS SPS & EHPS	SLIP OR FIXED	BOLT CIRCLE	DIMENSIONS IN INCHES			NOMINAL WEIGHT LBS
				A	B	C	
B6998-A	6"	Fixed	7"	16.28	10.55	5.50	27.0
B6998-B	6"	Slip	7"	16.28	10.55	5.50	27.6
B6998-C	5"	Fixed	7"	16.50	9.62	5.00	25.0
B6998-D	5"	Slip	7"	16.50	9.62	5.00	25.6
B6998-E	8" O.D.	Fixed	7"	16.50	12.06	5.75	30.0
B6998-F	8" O.D.	Slip	7"	16.50	12.06	5.75	30.6
B6998-G	6"	Fixed	5"	14.50	10.55	5.50	26.5
B6998-H	6"	Slip	5"	14.50	10.55	5.50	27.7
B6998-K	6"	Fixed	3"	12.25	10.55	5.50	24.3

DOSSERT® TYPE B7107 Series

Welded Support, Expansion Type Recommended for Voltages Up to 765 kV

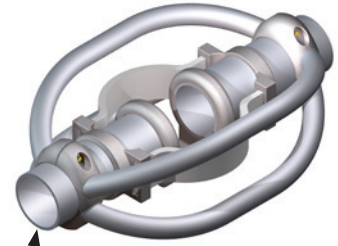
Expansion support is designed to be corona free for 765 KV operation. Expansion support is designed for maximum bus run of 150 feet (46m) operating between a minimum temperature of -20°F (-28.9°C) and a maximum temperature of 200°F (93.3°C). Assembly consists of support, expansion straps, corona rings and hardware. Stainless steel chatter springs are supplied with corona ring and support assembly. Aluminum mounting hardware is supplied as standard, galvanized steel can be furnished on request. Weldment end plugs can be furnished if required.

Material

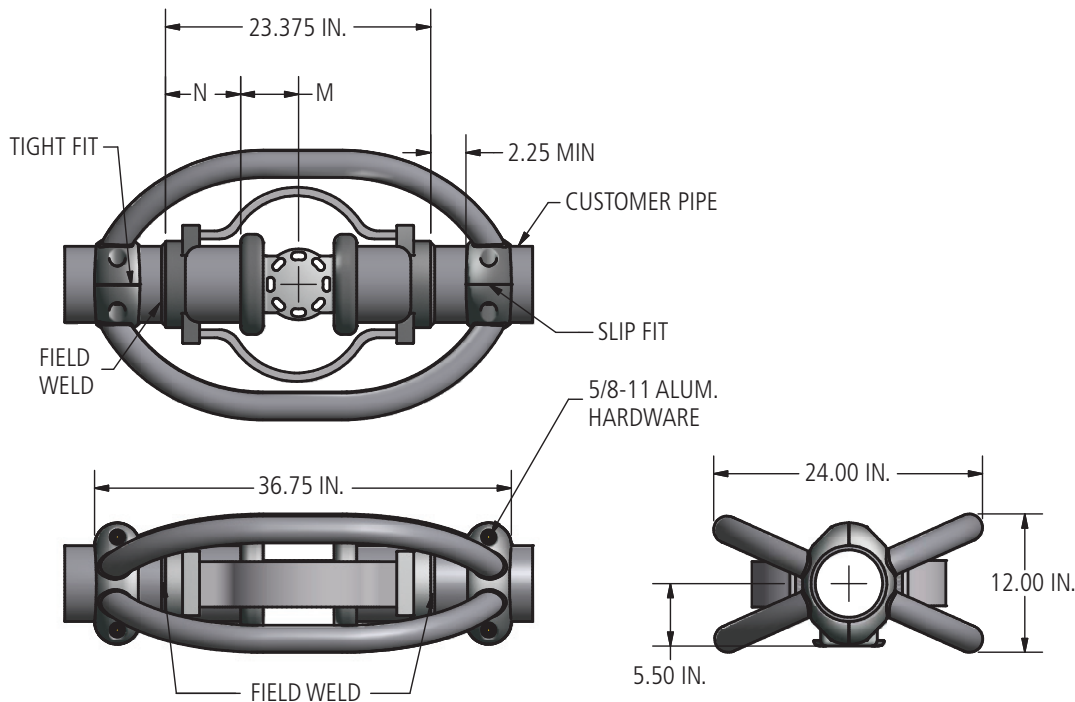
Aluminum Alloy

Hardware

Yellow anodized aluminum bolts, nuts, and lockwashers.
Galvanized steel mounting hardware included.



CUSTOMER PIPE



Ordering Information

CATALOG NUMBERS	CONDUCTOR SIZE TUBULAR BUS SPS & EHPS	BOLT CIRCLE	DIMENSIONS IN INCHES		NOMINAL WEIGHT LBS
			M	N	
B7107-A	6"	7"	5.25	4.81	66.6
B7107-B	6"	5"	4.12	5.94	64.3

DOSSERT® TYPE B7582-A Series

Tee Connector, Bolted, Welded Expansion Type Recommended for Voltages Up to 765 kV

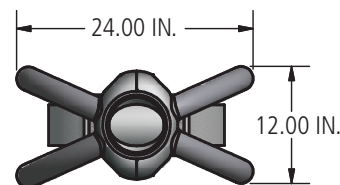
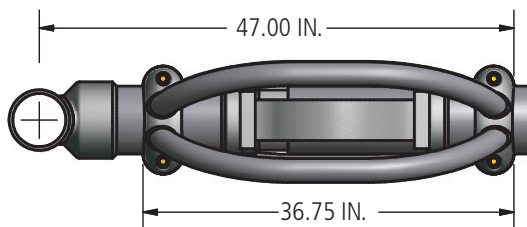
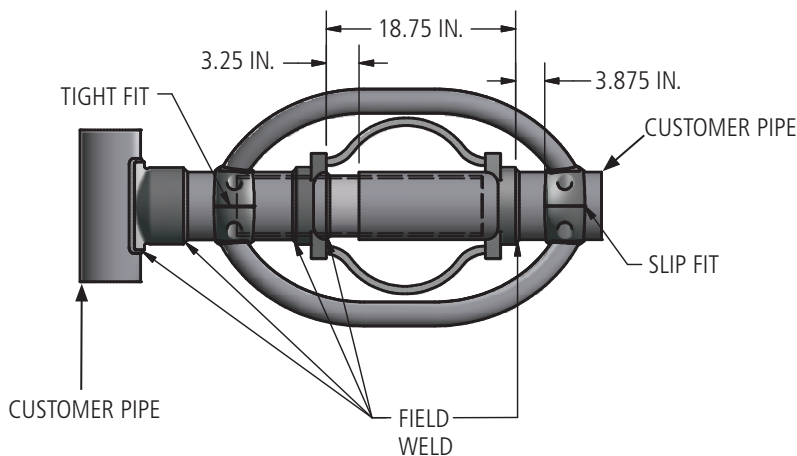
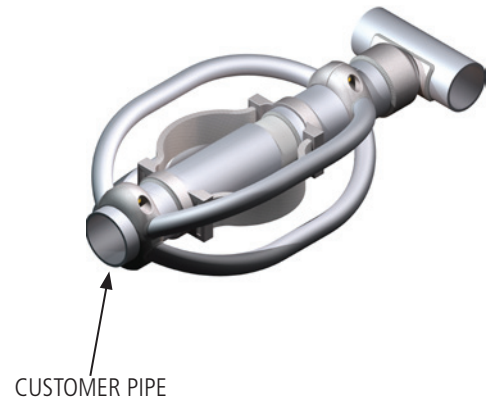
Expansion tee is designed to be corona free for 765 kV operation. Expansion tee is designed for maximum bus run of 150 feet (46M) operating between a minimum temperature of -20°F (-28.9°C) and maximum temperature of 200°F (93.3°C). Assembly consists of weld tee, guide insert, expansion straps, corona rings and hardware. Stainless steel chatter springs are supplied with corona ring assembly.

Material

Aluminum Alloy

Hardware

Yellow anodized aluminum bolts, nuts, washers, lockwashers.



Ordering Information

CATALOG NUMBERS	CONDUCTOR SIZE TUBULAR BUS		NOMINAL WEIGHT LBS
	RUN	TAP	
B7582-A	5"	6"	74.9
	6"	6"	74.9

DOSSERT® TYPE C7009 Series

Bi-Spacer Support for Strained Conductor Recommended for Voltages Up to 765 kV

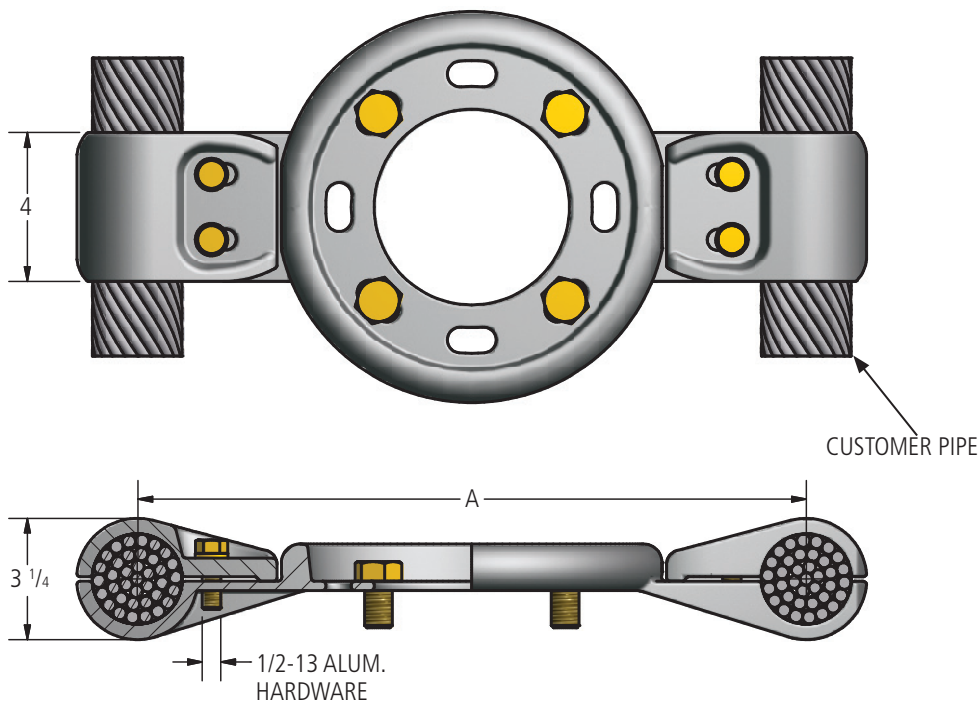
Support is designed to be corona free for 765 KV operation. Aluminum insulator mounting hardware is supplied as standard; galvanized steel hardware can be furnished on request.

Material

Aluminum Alloy

Hardware

Yellow anodized aluminum bolts, nuts, and lockwashers.
Galvanized steel mounting hardware included.



Ordering Information

CATALOG NUMBERS	DIMENSIONS IN INCHES			NOMINAL WEIGHT LBS
	CONDUCTOR SIZE	BOLT CIRCLE	A	
	O.D.			
C7009-A	2.4	7"	18.00	11.4
C7009-B	2.311	7"	17.75	11.4
C7009-C	2.4	5"	18.00	11.4

DOSSERT® TYPE B7070 Series

**Coupler, Bolted, For Tubular Bus Conductor
Recommended for Voltages Up to 765 kV**

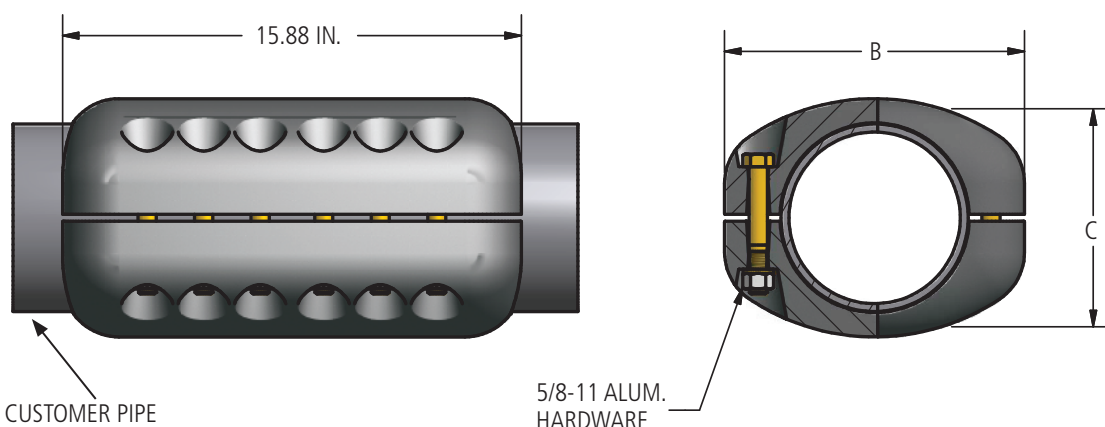
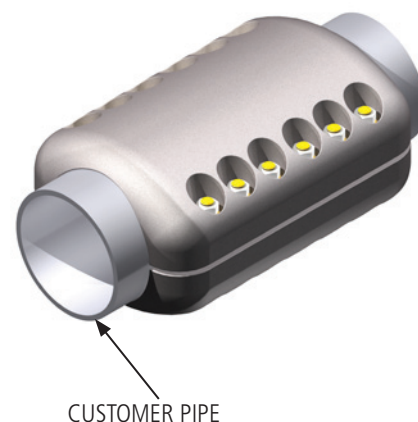
Bolted coupler is designed to be corona free for 765kV operation. Bolt heads are captive for one wrench installation. Contact surfaces are protected with oxide inhibitor.

Material

Aluminum Alloy

Hardware

Yellow anodized aluminum bolts, nuts, washers, and lockwashers.



Ordering Information

CATALOG NUMBERS	CONDUCTOR SIZE TUBULAR BUS SPS & EHPS	DIMENSIONS IN INCHES		NOMINAL WEIGHT LBS
		B	C	
B7070-A	6	10.38	8.08	40.6
B7070-B	5	9.56	7.06	36.8

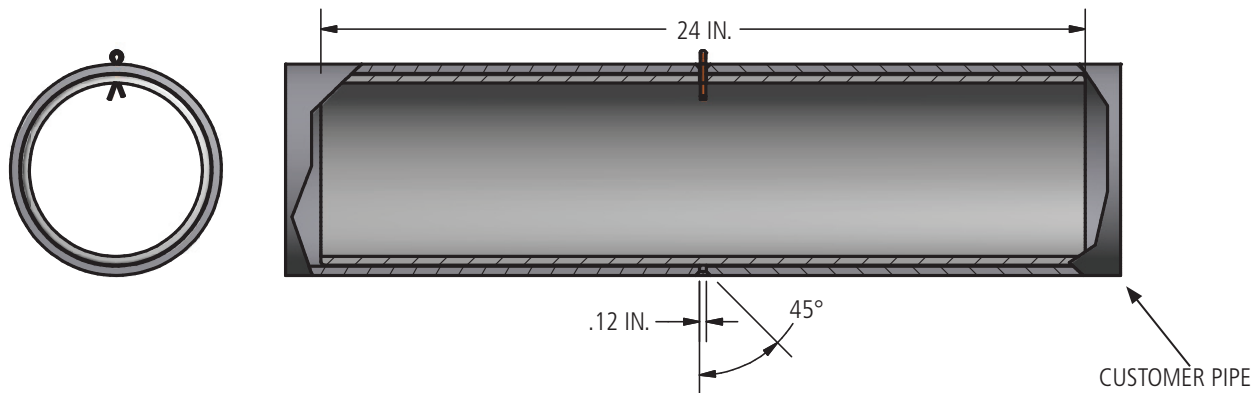
DOSSERT® TYPE 15400 Series

**Internal Coupler Connectors, Welded, For Tubular Bus
Recommended for Voltages Up to 765 kV**

Weld insert is designed to be corona free for 765 kV operation. Insert is furnished with aluminum centering device to insure proper position and to provide gap for welding.

Material

Extruded Aluminum Pipe



Ordering Information

CATALOG NUMBERS	CONDUCTOR SIZE TUBULAR BUS	NOMINAL WEIGHT LBS
15413	6 SPS	12.0
15433	6 EHPS	17.0

DOSSERT® TYPE 34433, 34453 Series

End Plug For Round Tubular Bus

Recommended for Voltages Up to 765 kV

Corona bell is designed to be corona free for 765 kV service.

Material

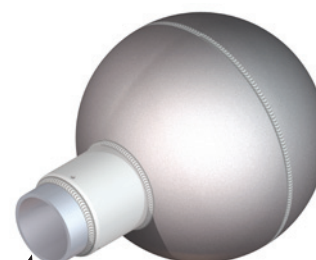
Aluminum Alloy

Hardware

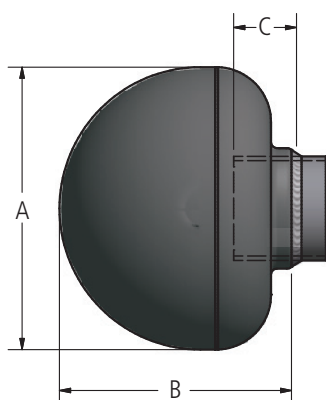
Stainless steel socket set screws (for Bolted style only)



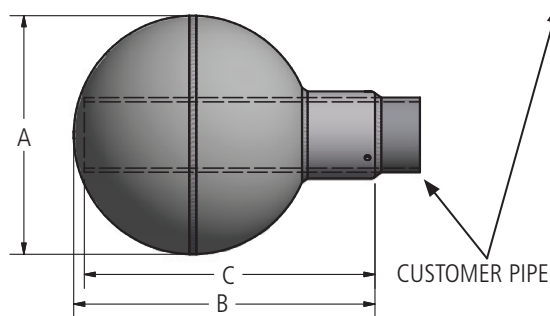
34433-EHV



CXBV600-21-EHV-AA



WELDED 34433 EHV



BOLTED CXBV600-21-EHV-AA

Ordering Information

CATALOG NUMBERS	CONDUCTOR SIZE TUBULAR BUS SPS & EHPS	DIMENSIONS IN INCHES			NOMINAL WEIGHT LBS
		A	B	C	
34433EHV	6	17.00	13.25	3.88	18.8
CXBV600-21-EHV-AA	6	21.00	22.12	20.90	30.7

DOSSERT® TYPE BAC-EHV-AA

Recommended for Voltages Up to 765 kV

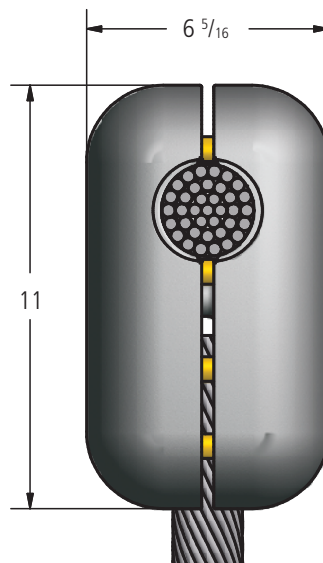
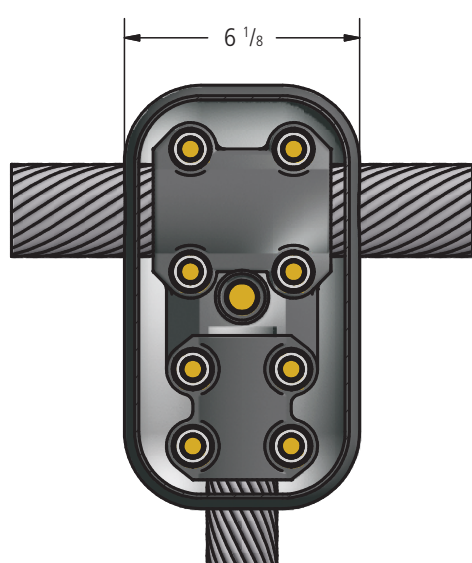
Bolted tee connector is designed to be corona free for 765 kV operation.

Material

Aluminum Alloy

Hardware

Yellow anodized aluminum bolts, nuts, and lockwashers.



Ordering Information

CATALOG NUMBER	CABLE SIZE	
	RUN	TAP
BAC240R-135A-EHV-AA	2.40 DIA. ALUM.	1351, 5 (45/7) ACSR.
BAC240R-240R-EHV-AA	2.40 DIA. ALUM.	2.40 DIA. ALUM.
BAC240R-250-EHV-AA	2.4 DIA. ALUM.	2500 MCM AL 2156 ACSR
BAC250-250-EHV-AA	2500 MCM AL. 2156 ACSR	2500 MCM AL 2156 ACSR

DOSSERT® TYPE BCW-EHV-AA

Tee Connector

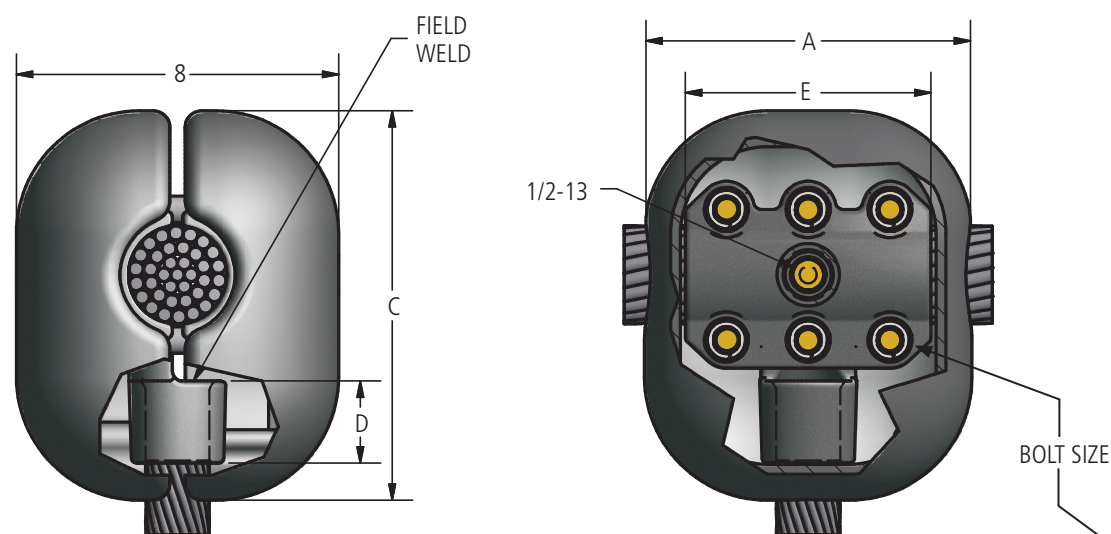
Bolted tee connector is designed to be corona free for 765 kV operation.

Material

Aluminum alloy

Hardware

Yellow anodized aluminum bolts, nuts, and lockwashers.



Ordering Information

CATALOG NUMBER	CABLE SIZE		DIMENSIONS IN INCHES				BOLT SIZE
	RUN	TAP	A	C	D	E	
BCW95A-240R-EHV-AA	715.5(26/7) - 954(54/7) MCM	2.4 OD	8	9 1/8	2 3/4	5 1/2	1/2
BCW135A-240R-EHV-AA	1192.5(54/19) - 1351.5(45/7) MCM	2.4 OD	8	9 1/2	2 3/4	5 1/2	1/2
BCW240R-95A-EHV-AA	2.4 OD	715.5(26/7) - 954(54/7) MCM	8	9 1/2	1 3/4	6	5/8
BCW240R-135A-EHV-AA	2.4 OD	1192.5(54/19) - 1351.5(45/7) MCM	8	9 1/2	2	6	5/8
BCW240R-240R-EHV-AA	2.4 OD	2.4 OD	12	10	2 3/4	10	5/8

DOSSERT® TYPE B7568-A Series

Tee Connector, Bolted, For Tubular Bus Conductor
Recommended for Voltages up to 765 kV

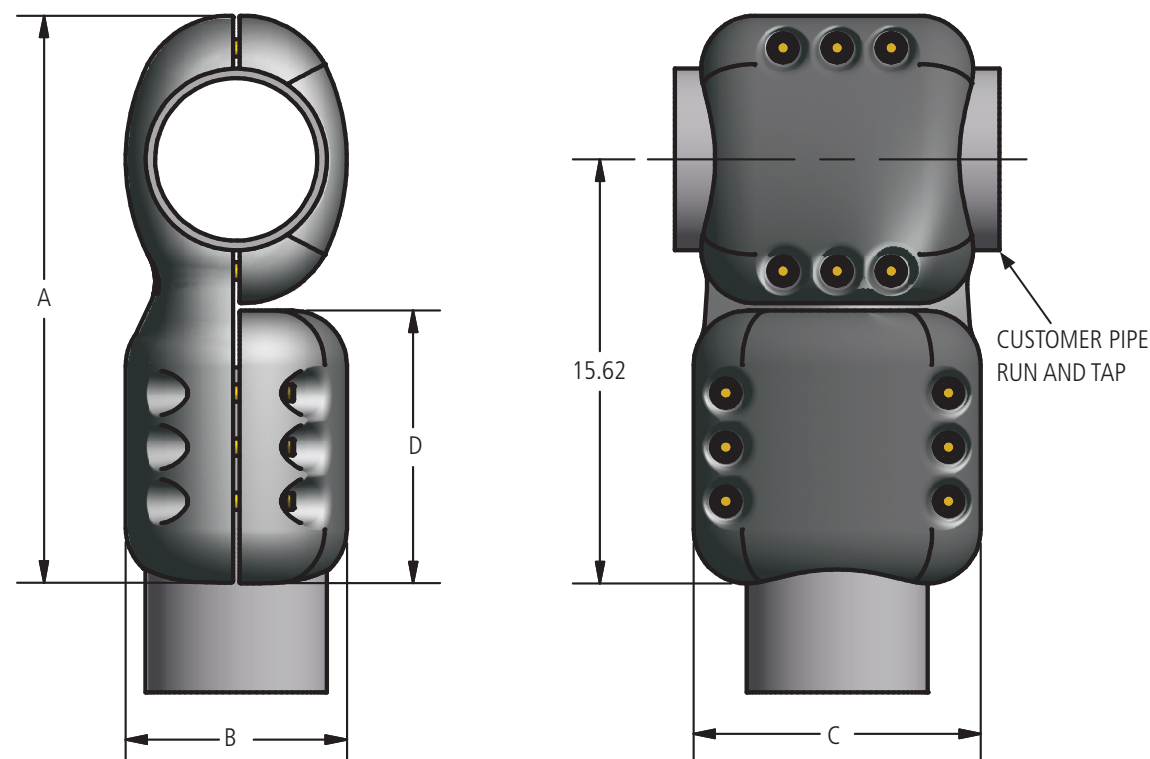
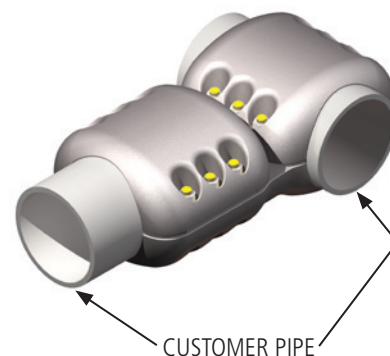
Bolted tee connector is designed to be corona free for 765 kV operation. Bolt heads are captive for one wrench installation. Contact surfaces are protected with oxide inhibitor.

Material

Aluminum Alloy

Hardware

Yellow anodized aluminum bolts, nuts, washers, lockwashers.



Ordering Information

CATALOG NUMBER	CONDUCTOR SIZE TUBULAR BUS SPS & EHPS		DIMENSIONS IN INCHES				NOMINAL WEIGHT LBS
	RUN	TAP	A	B	C	D	
B7568-A	6"	6"	20.95	8.18	10.66	10.07	44.0

DOSSERT® TYPE B7071 Series

Welded Tee Adapter, NPS to Two Conductors Recommended for Voltages up to 765 kV

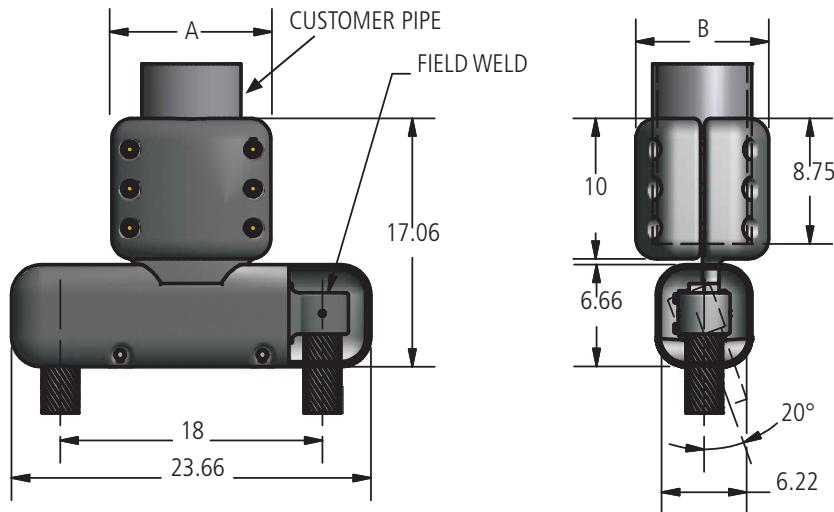
Bolted adapter is designed to be corona free for 765 KV operation. Assembly consists of bolted end connector, two terminals, corona shields and hardware. Bolt heads are captive for one wrench installation.

Material

Aluminum Alloy

Hardware

Yellow anodized aluminum bolts, nuts, washers, lock washers



Ordering Information

CATALOG NUMBERS	CONDUCTOR SIZE TUBULAR BUS		TERMINAL ANGLE	DIMENSIONS IN INCHES		NOMINAL WEIGHT LBS
	SPS	STRAIN BUS		A	B	
B7071-A	6"	2.4	STR.	10.62	8.12	51.1
B7071-B	6"	2.4	20°	10.62	8.12	50.9
B7071-C	5"	2.4	STR.	9.56	7.06	49.4
B7071-D	5"	2.4	20°	9.56	7.06	49.2

DOSSERT® TYPE B7072 Series

Welded Tee Adapter, NPS to Two Conductors Recommended for Voltages up to 765 kV

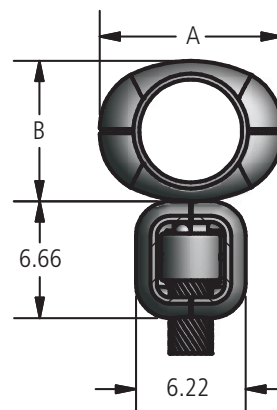
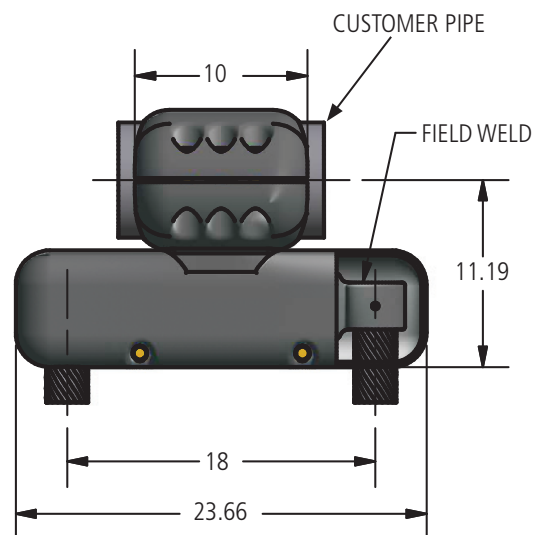
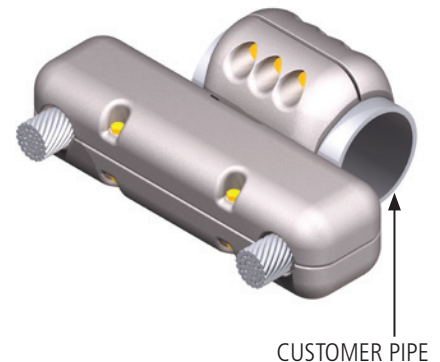
Bolted adapter is designed to be corona free for 765 KV operation. Assembly consists of bolted end connector, two terminals, corona shields and hardware. Bolt heads are captive for one wrench installation.

Material

Aluminum Alloy

Hardware

Yellow anodized aluminum bolts, nuts, washers, lockwashers.



Ordering Information

CATALOG NUMBERS	CONDUCTOR SIZE TUBULAR BUS		DIMENSIONS IN INCHES		NOMINAL WEIGHT LBS
	SPS & EHPS	STRAIN BUS	A	B	
B7072-A	6"	2.4	10.66	8.12	47.1
B7072-B	5"	2.4	9.50	7.06	44.4

DOSSERT® TYPE B7095 Series

Tee Adapter – 45°, Bolted, NPS to Two Conductor Bundle
Recommended for Voltages up to 765 kV

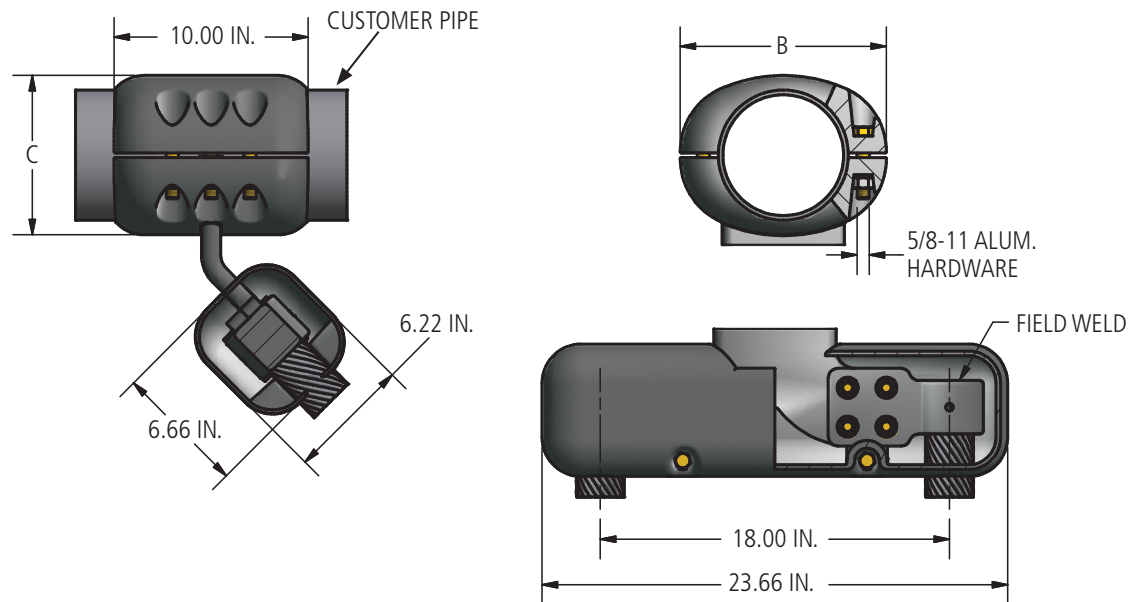
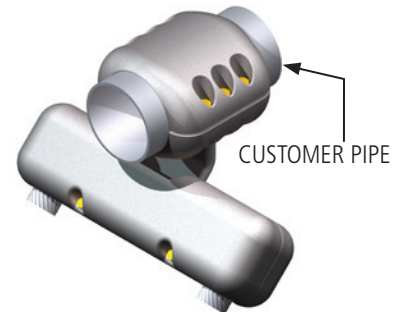
Bolted 45° tee adapter is designed to be corona free for 765 kV operation. Assembly consists of bolted 45° tee connector, two terminals, corona shields and hardware. Bolt heads are captive for one wrench installation. Contact surfaces are protected with oxide inhibitor.

Material

Aluminum Alloy

Hardware

Yellow anodized aluminum bolts, nuts, washers, lockwashers.



Ordering Information

CATALOG NUMBERS	CONDUCTOR SIZE		DIMENSIONS IN INCHES		NOMINAL WEIGHT LBS
	TUBULAR BUS SPS & EHPS	STRAIN BUS	B	C	
B7095-A	6"	2.4	10.66	8.12	46.8
B7095-B	5"	2.4	9.50	7.06	44.1

DOSSERT® TYPE B7006 Series

Tee Adapter, Welded, NPS to Conductor Bundle
Recommended for Voltages up to 765 kV

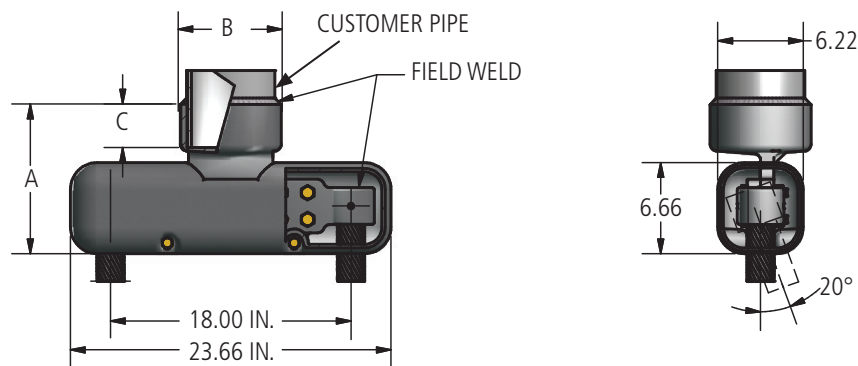
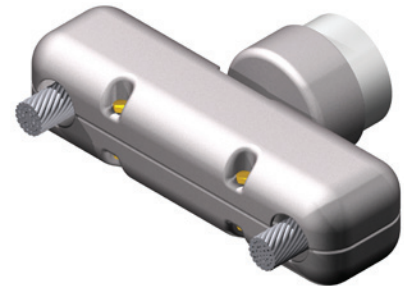
Welded end adapter is designed to be corona free for 765 kV operation. Assembly consists of welded end connector, two or three terminals, corona shields and hardware.

Material

Aluminum Alloy

Hardware

Yellow anodized aluminum bolts, nuts, washers, lockwashers.



Ordering Information

CATALOG NUMBERS	CONDUCTOR SIZE			TERMINAL ANGLE	DIMENSIONS IN INCHES			NOMINAL WEIGHT LBS
	TUBULAR BUS SPS & EHPS	STRAIN			A	B	C	
		MIN	MAX					
B7006-A	6	2.4		STR.	11.19	7.56	3.25	32.8
B7006-B	6	2.4		20°	11.19	7.56	3.25	32.6
B7006-C	5	2.4		STR.	10.69	6.38	2.75	30.6
B7006-D	5	2.4		20	10.69	6.38	2.75	30.4
B7006-E	6	1.361	1.423	STR.	11.19	7.56	3.25	32.8
B7006-F	6	1.361	1.423	20°	11.19	7.56	3.25	32.6

DOSSERT® TYPE B7875 Series

Tee Adapter, Welded, NPS to Conductor Bundle Recommended for Voltages up to 765 kV

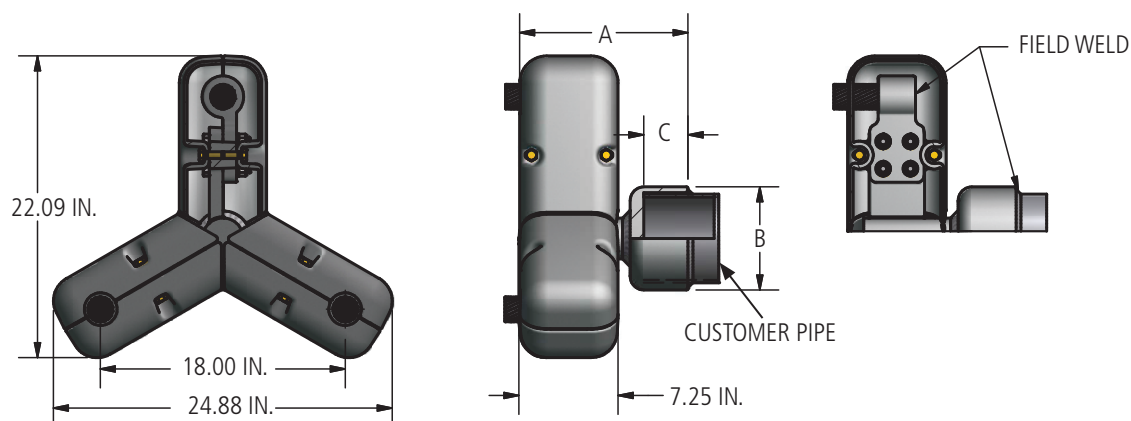
Welded end adapter is designed to be corona free for 765 kV operation. Assembly consists of welded end connector, two or three terminals, corona shields and hardware.

Material

Aluminum Alloy

Hardware

Yellow anodized aluminum bolts, nuts, washers, lockwashers.



Ordering Information

CATALOG NUMBER	CONDUCTOR SIZE		DIMENSIONS IN INCHES			NOMINAL WEIGHT LBS
	TUBULAR BUS SPS & EHPS	STRAIN BUS DIAMETER	A	B	C	
B7875-A	6"	1.981 - 2.042	12.38	7.56	3.25	52.5

DOSSERT® TYPE B7096-A Series

Adapter, Welded, NPS to Three Conductor Bundle
Recommended for Voltages up to 765 kV

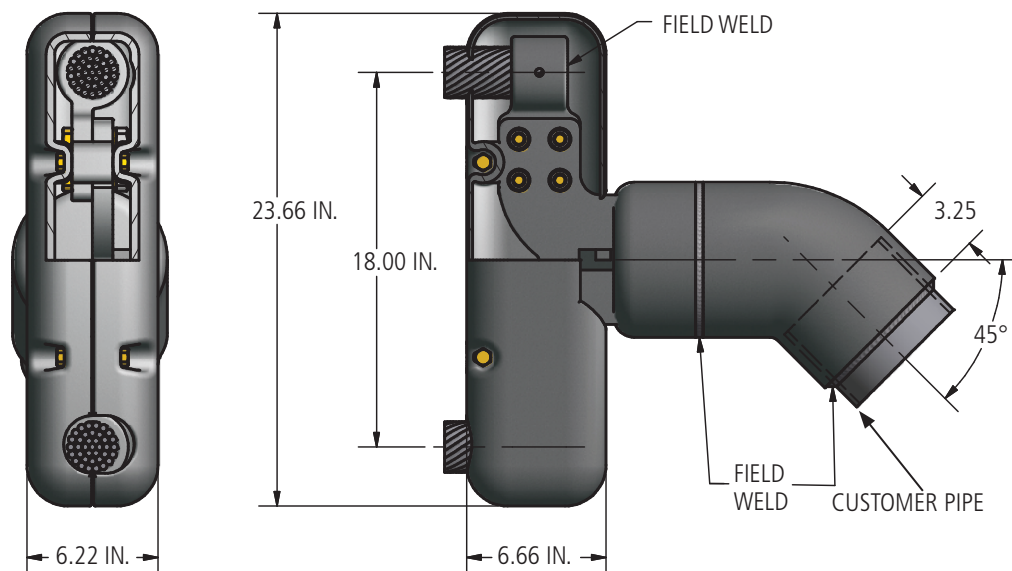
Welded 45° end adapter is designed to be corona free for 765 kV operation. Assembly consists of 45° elbow, end connector, two terminals, corona shields and hardware. Connector angle may be rotated to permit 45° take-off for horizontal or vertical planes.

Material

Aluminum Alloy

Hardware

Yellow anodized aluminum bolts, nuts, washers, lockwashers.



Ordering Information

CATALOG NUMBER	CONDUCTOR SIZE		NOMINAL WEIGHT LBS
	TUBULAR BUS SPS & EHPS	STRAIN BUS	
B7096-A	6"	2.4	46.2

DOSSERT® TYPE B7566, B7565 Series

Tee Adapter, Welded, NPS to Two Conductors
Recommended for Voltages up to 765 kV

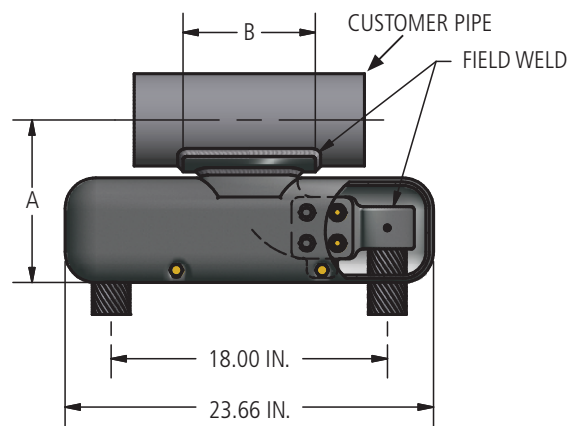
Welded tee adapter is designed to be corona free for 765 kV operation. Assembly consists of welded tee connector, two terminals and corona shield.

Material

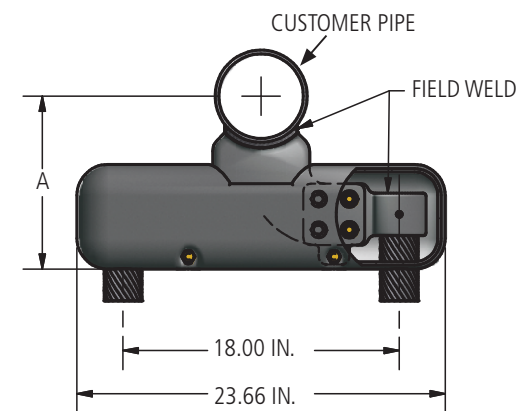
Aluminum Alloy

Hardware

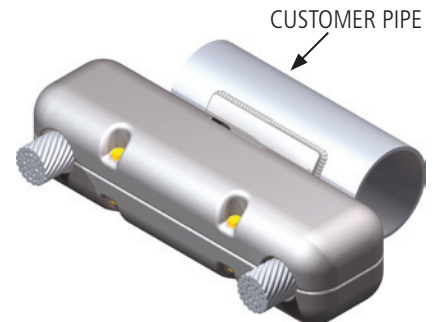
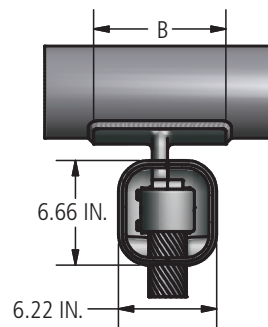
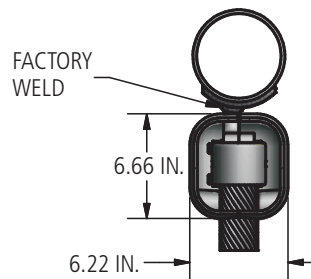
Yellow anodized aluminum bolts, nuts, washers, lockwashers.



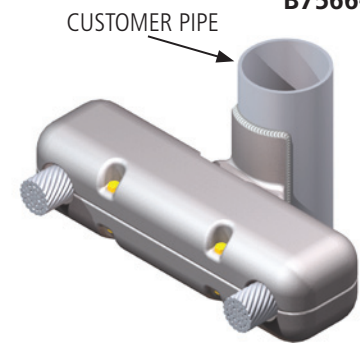
B7566-A



B7565-A



B7566-A



B7565-A

765 kV
Tee Connectors

Ordering Information

CATALOG NUMBERS	CONDUCTOR SIZE		DIMENSIONS IN INCHES		NOMINAL WEIGHT LBS	
	TUBULAR BUS SPS & EHPS	STRAIN BUS	A	B		
B7566-A	5"	2.4	11.31	8.62	27.0	
	6"					
B7565-A	5"		11.97		27.8	
	6"					

DOSSERT® TYPE B7876, B7882 Series

**Tee Adapter, Welded, NPS to Three or Four Conductor Bundle
Recommended for Voltages up to 765 kV**

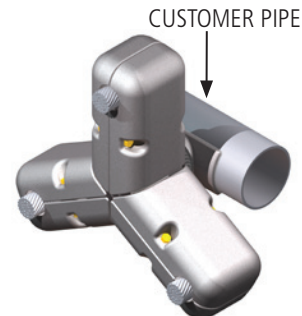
Welded tee adapter is designed to be corona free for 765 kV operation. Assembly consists of welded tee connector, three or four terminals and corona shields.

Material

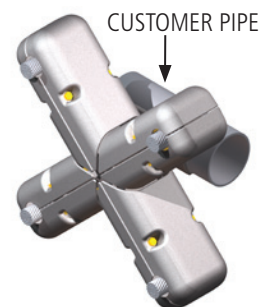
Aluminum Alloy

Hardware

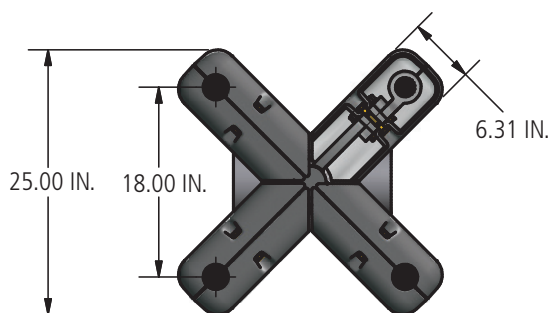
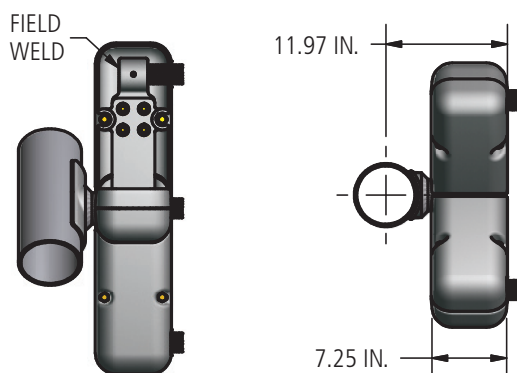
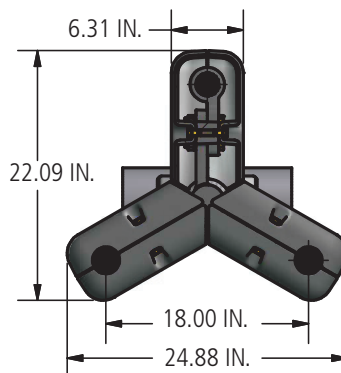
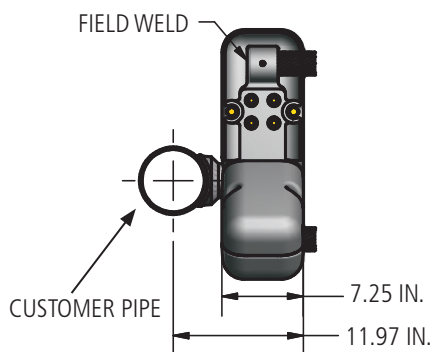
Yellow anodized aluminum bolts, nuts, washers, lockwashers.



B7876-A



B7882-A



Ordering Information

CATALOG NUMBERS	CONDUCTOR SIZE		NOMINAL WEIGHT LBS	NUMBER OF STRAIN BUS
	TUBULAR BUS SPS & EHPS	STRAIN BUS		
B7876-A	5"	1.981 - 2.042	47.9	3
	6"			
B7882-A	5"	1.737 - 1.792	68.3	4
	6"			
B7882-B	5"	1.361-1.423	68.3	4
	6"			

DOSSERT® TYPE WT-EHV-AA

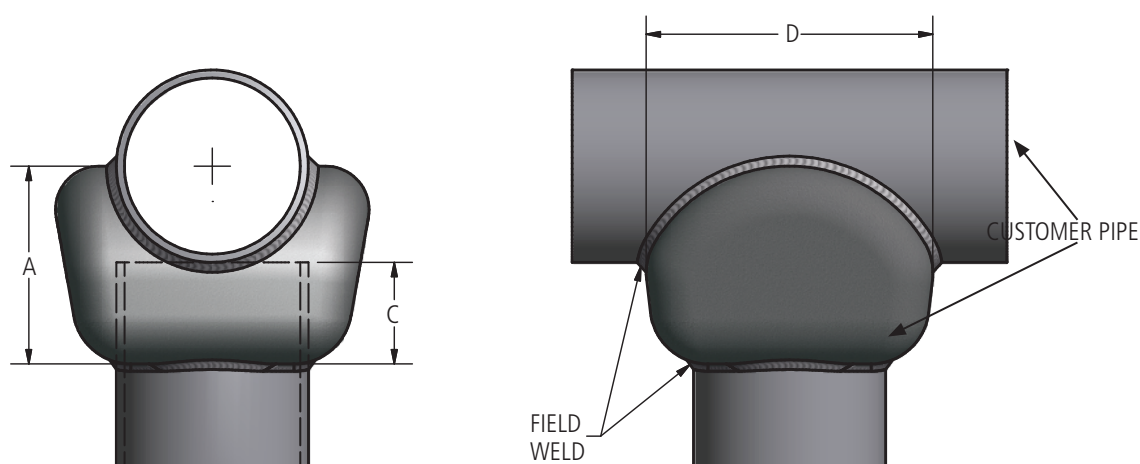
Tee Connector

Recommended for Voltages up to 765 kV

Welded tee connector is designed to be corona free for 765 kV service.

Material

Aluminum Alloy



765 kV
Tee Connectors

Ordering Information

CATALOG NUMBER	SPS	DIMENSIONS IN INCHES		
		A	C	D
WT600-600-EHV-AA	6	6 13/16	3 1/2	10

DOSSERT® TYPE WRP2CA-20-EHV-AA, WRP2CA-45-EHV-AA

Recommended for Voltages up to 765 kV

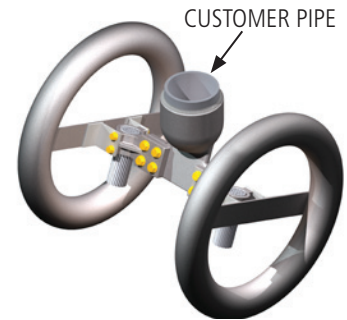
Tee connector is designed to be corona free for 765 kV service.

Material

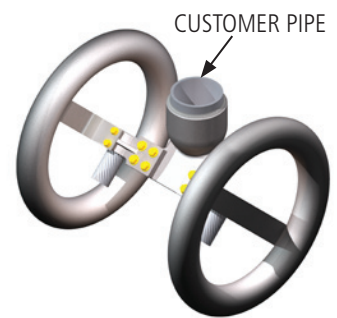
Aluminum Alloy

Hardware

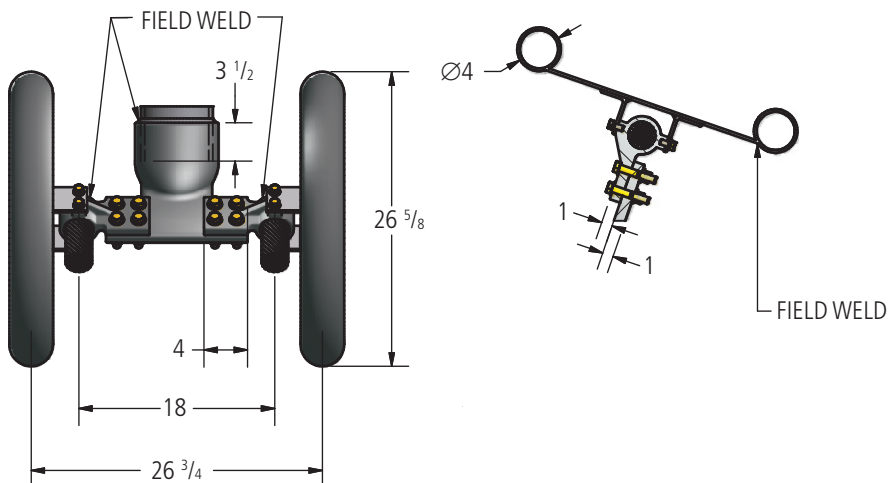
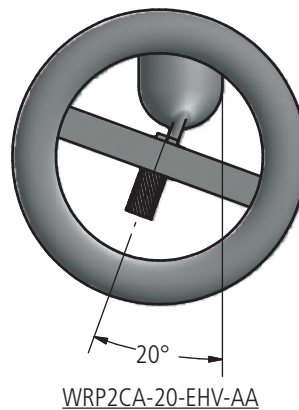
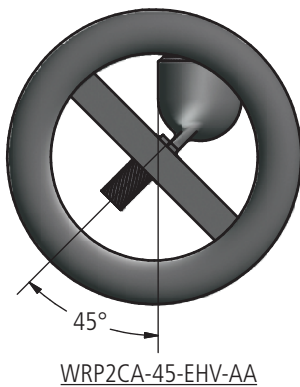
Yellow anodized aluminum bolts, nuts, washers, lockwashers.



WRP2CA-20-EHV-AA



WRP2CA-45-EHV-AA



Ordering Information

CATALOG NUMBER	SPS	CONDUCTOR DIAMETER
WRP2CA-600-240R-18-45-EHV-AA	6	2.4
WRP2CA-600-240R-18-20-EHV-AA	6	

DOSSERT® TYPE WPC-4S4-AA-WH, WPCA-4S4-90-AA-WH

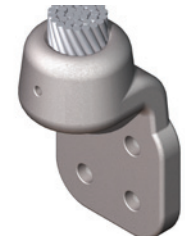
Welded Terminal

Recommended for Voltages up to 765 kV

Terminal pad is designed to be corona free for 765 kV operation.

Material

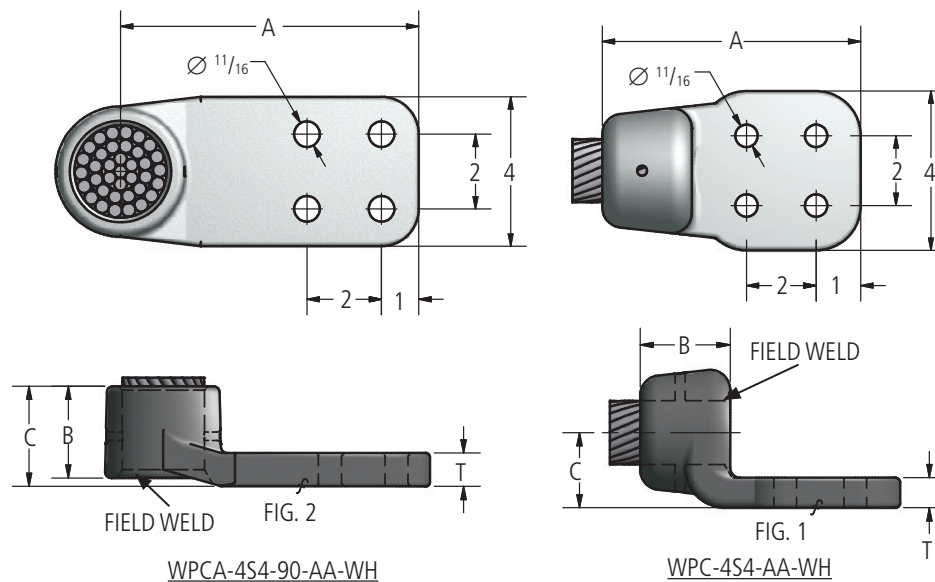
Aluminum Alloy



WPC-4S4-AA-WH



WPCA-4S4-90-AA-WH



Ordering Information

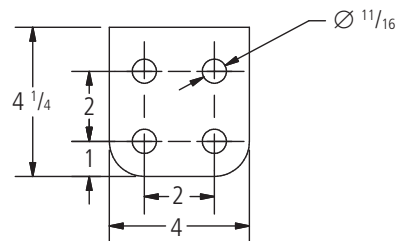
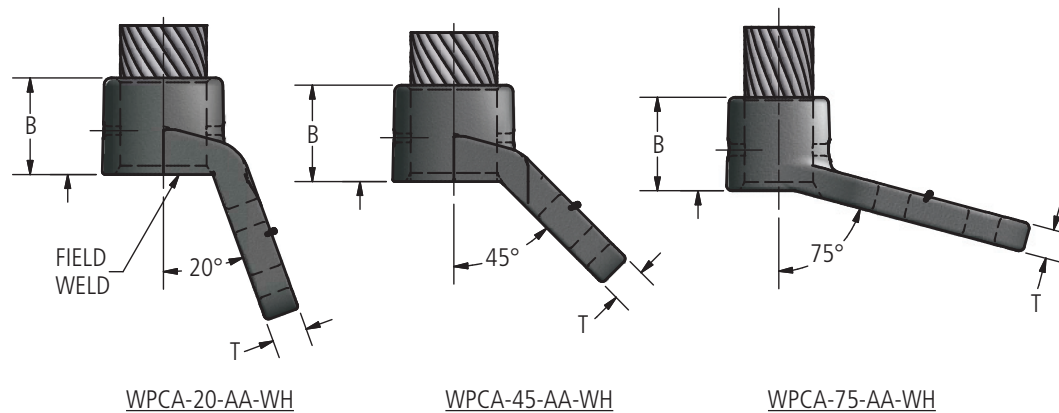
CATALOG NUMBER	ACSR RANGE	FIGURE NUMBER	DIMENSIONS IN INCHES			
			A	B	C	T
WPC95A-4S4-AA-WH	715.5(26/7) - 954(45/7) MCM	1	6 1/4	1 3/4	1 1/2	1
WPCA95A-4S4-90-AA-WH	715.5(26/7) - 954(45/7) MCM	2	6	1 3/4	2	5/8
WPC135A-4S4-AA-WH	1192.5(54/19) - 1351.5(45/7) MCM	1	6 1/2	2	1 5/8	5/8
WPCA135A-4S4-90-AA-WH	1192.5(54/19) - 1351.5(45/7) MCM	2	5 5/8	2	2 1/4	5/8
WPC240R-4S4-AA-WH	2515(76/19) MCM	1	7 1/4	2 3/4	2 1/2	1
WPCA240R-4S4-90-AA-WH	2515(76/19) MCM	2	8	2 3/4	3	1

DOSSERT® TYPE WPCA-20-AA-WH, WPCA-45-AA-WH, WPCA-75-AA-WH

Terminal pad is designed to be corona free for 765 kV operation.

Material

Aluminum Alloy



WPCA-20-AA-WH



WPCA-45-AA-WH



WPCA-75-AA-WH

Ordering Information

CATALOG NUMBER	ACSR RANGE	DIMENSIONS IN INCHES	
		B	T
WPCA95A-4S4-75-AA-WH	715.5(26/7) - 954(45/7) MCM	1 3/4	5/8
WPCA135A-4S4-75-AA-WH	1192.5(54/19) - 1351.5(45/7) MCM	2	5/8
WPCA240R-4S4-20-AA-WH	2034(72/7) - 2312(76/19) MCM	2 3/4	1
WPCA240R-4S4-45-AA-WH	2034(72/7) - 2312(76/19) MCM	2 3/4	1

DOSSERT®

TYPE WPCA-15L-AA-WH, WPCA-15R-AA-WH, WPCA-15L-20-AA-WH, WPCA-15R-20-AA-WH

Welded Terminal

Angled welded terminal is designed for 2.4 diameter Aluminum conductor.

Material

Aluminum Alloy



WPCA-15L-AA-WH



WPCA-15R-AA-WH



WPCA-15L-20-AA-WH



WPCA-15R-20-AA-WH

765 kV
Terminal Connector

Ordering Information

CATALOG NUMBER	REFERENCE DRAWINGS
WPCA-15L-AA-WH	D-4475
WPCA-15R-AA-WH	D-4476
WPCA-15L-S1-AA-WH	D-4491
WPCA-15R-S1-AA-WH	D-4492

DOSSERT® TYPE B7094, B7567 Series

End Terminal, Welded, NPS to Flat Pad
Recommended for Voltages up to 765 kV

Terminal is designed to be corona free for 765 kV operation when bolted to B7001 terminal connectors. Assembly consists of terminal and aluminum terminal hardware.

Material

Aluminum Alloy

Hardware

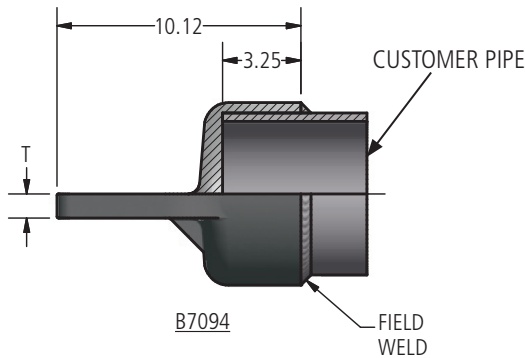
Yellow anodized aluminum bolts, nuts, washers, lockwashers.



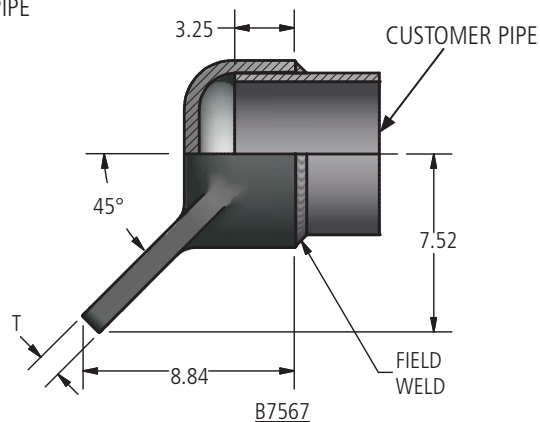
B7094-A



B7567-A



B7094



B7567

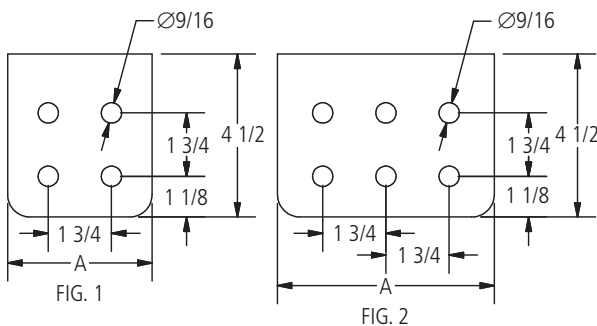


FIG. 1

FIG. 2

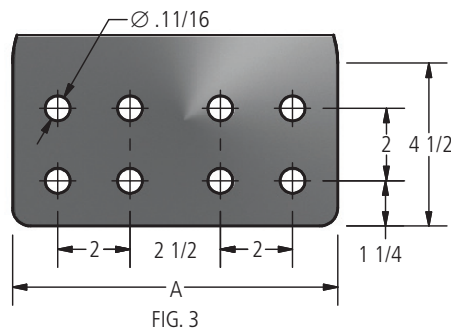


FIG. 3

Ordering Information

CATALOG NUMBER	FIG. NUM.	SPS / EHPS	DIMENSIONS IN INCHES	
			A	T
B7094-A	3	6	9	1
B7094-B	3	6	9	1 1/4
B7094-C	2	6	5	1
B7094-D	1	6	4	1
B7094-E	2	6	6	1 1/4
B7567-A	3	6	9	1

DOSSERT® TYPE B7001 Series

Recommended for Voltages up to 765 kV

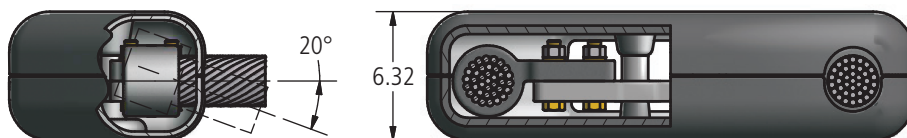
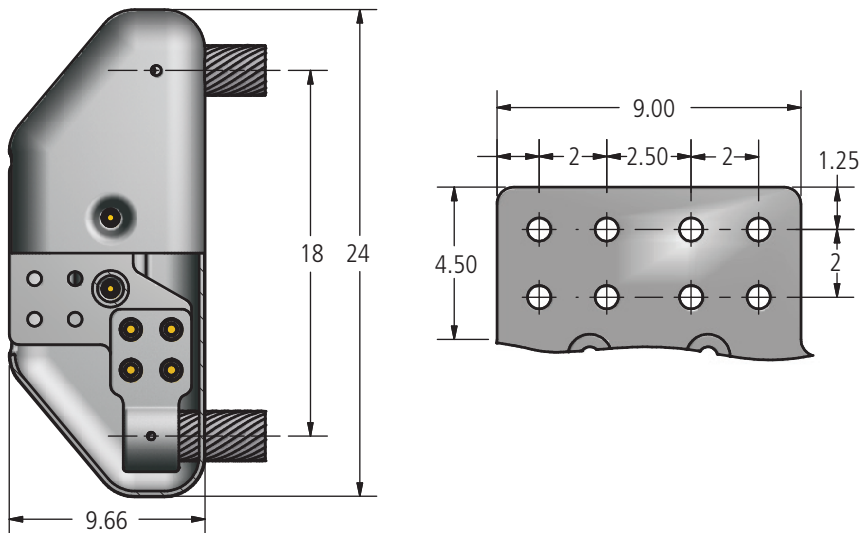
Terminal connector is designed to be corona free for 765 kV operation when bolted to equipment terminal. Assembly consists of connector, two terminals, corona shield and hardware.

Material

Aluminum Alloy

Hardware

Yellow anodized aluminum bolts, nuts, washers, lockwashers.



Ordering Information

CATALOG NUMBERS	CONDUCTOR SIZE	TERMINAL ANGLE	NOMINAL WEIGHT LBS
	STRAIN BUS DIAMETER IN INCHES		
B7001-A	2.4	STR.	28.0
B7001-B	2.4	20°	28.0

DOSSERT® TYPE WP2CA-45-EHV-AA Series

Corona Free Terminal Connector

Recommended for Voltages up to 765 kV

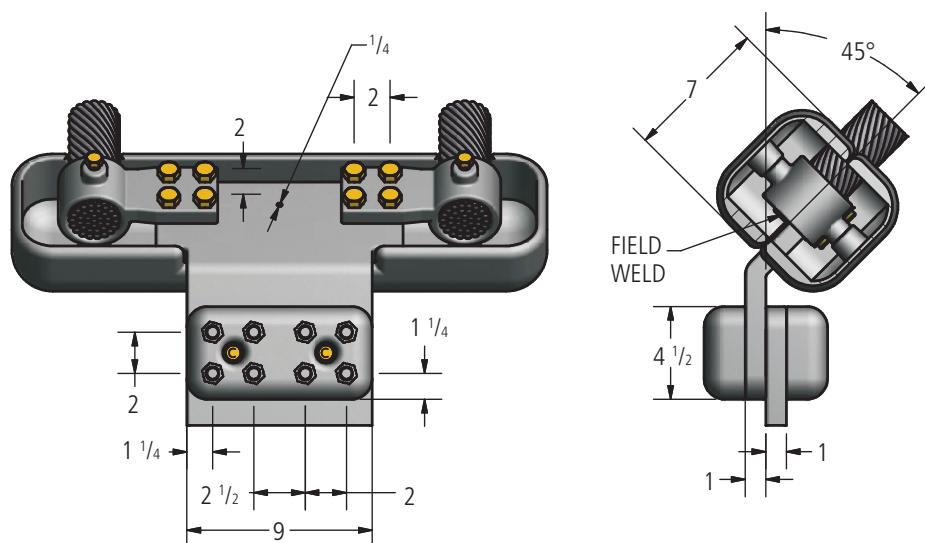
Terminal connector is designed to be corona free for 765 kV operation when bolted to equipment terminal. Assembly consists of connector, two terminals, corona shield and hardware.

Material

Aluminum Alloy

Hardware

Yellow anodized aluminum bolts, nuts, washers, lockwashers.



Ordering Information

CATALOG NUMBER	CABLE SIZE
WP2CA240R-9-41/2-15-45-EHV-AA	2.40 DIA

DOSSERT® TYPE B7583-A Series

Welded Expansion Terminal

Recommended for Voltages up to 765 kV

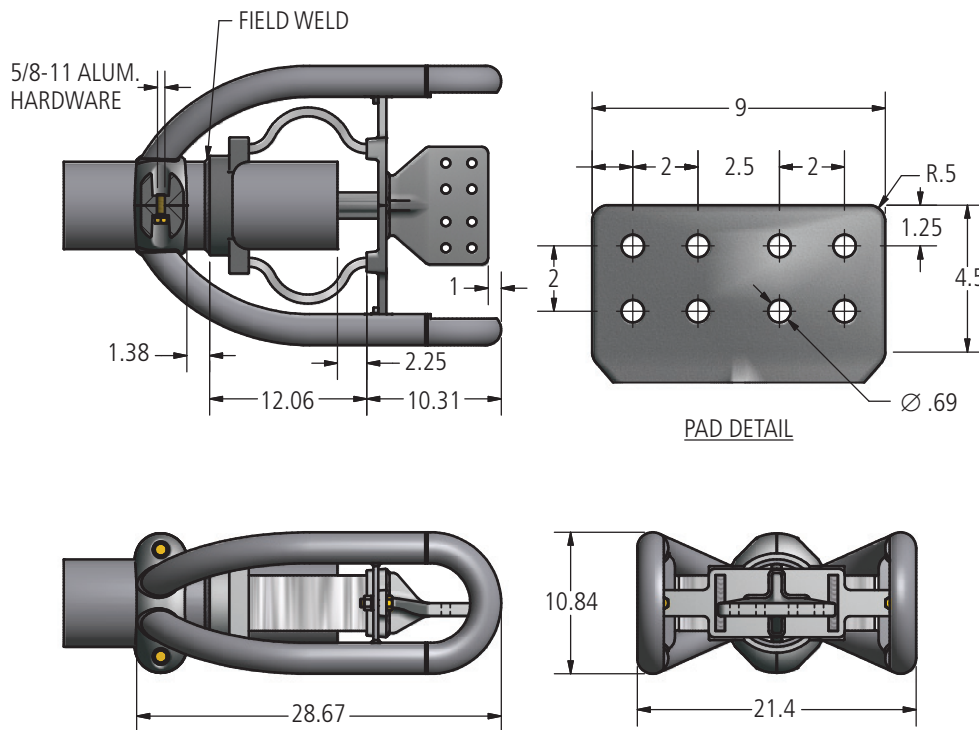
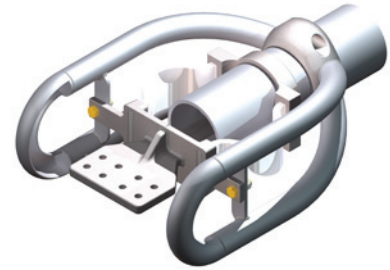
Expansion terminal is designed to be corona free for 765 kV operation. Expansion terminal is designed for a maximum bus run of 100 feet (30.5m) operating between a minimum temperature of -20°F (-28°C) and a maximum temperature of 200°F (93.3°C). Assembly consists of expansion terminal, corona rings and hardware. Stainless steel chatter springs are supplied with corona ring assembly.

Material

Aluminum Alloy

Hardware

Yellow anodized aluminum bolts, nuts, washers, lockwashers.



Ordering Information

CATALOG NUMBERS	CONDUCTOR SIZE	NOMINAL WEIGHT LBS
	STRAIN BUS DIAMETER IN INCHES	
B7583-A	6"	49.0

DOSSERT® TYPE B7878-A Series

Terminal Connector - Three Bundle
Recommended for Voltages up to 765 kV

Terminal connector is designed to be corona free for 765 kV operation when bolted to equipment terminal. Assembly consists of connector, three terminals, corona shield and hardware.

Material

Aluminum Alloy

Hardware

Yellow anodized aluminum bolts, nuts, washers, lockwashers.

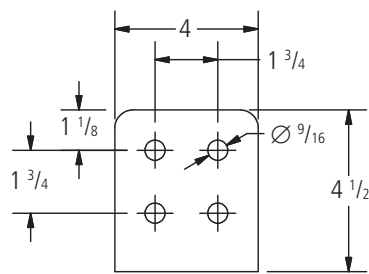
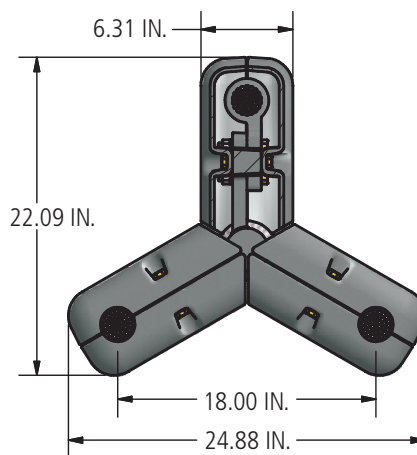
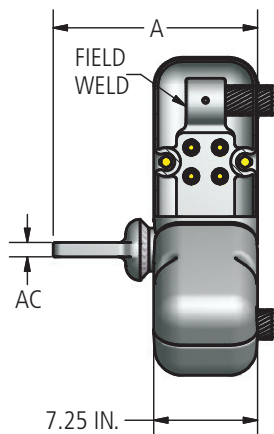


FIG. 1

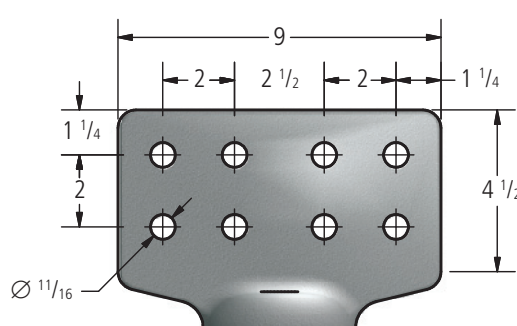


FIG. 2

Ordering Information

CATALOG NUMBERS	FIGURE NUMBER	CONDUCTOR SIZE	DIMENSIONS IN INCHES		NOMINAL WEIGHT LBS
		STRAIN BUS DIAMETER IN INCHES	A	AC	
B7878-A	2	1.981 - 2.042	14.19	1.00	51.9
B7878-B	1	1.981 - 2.042	14.19	1.00	49.6

DOSSERT® TYPE 34640-EHV Series

Ground Stud, Welded

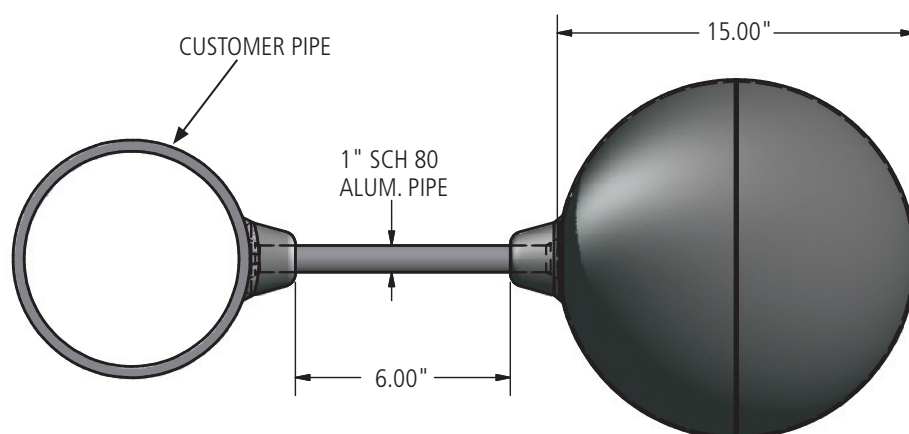
Ground stud is designed to be corona free for 765 kV operation.

Material

Aluminum Alloy



34640-EHV



Ordering Information

CATALOG NUMBERS	CONDUCTOR SIZE TUBULAR SIZE SPS & EHPS	NOMINAL WEIGHT LBS
34640EHV	4" to 6"	16.0

DOSSERT® TYPE C6999-A, B7073 Series

Spacer Clamps

Recommended for Voltages up to 765 kV

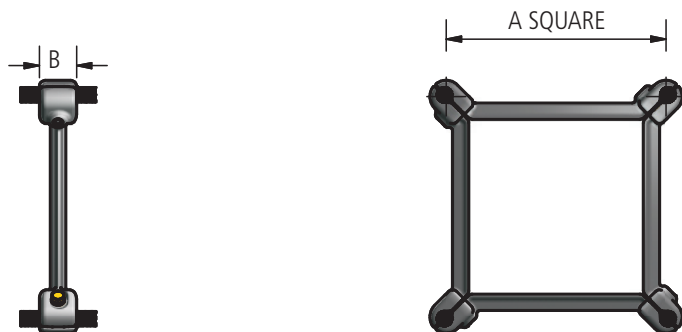
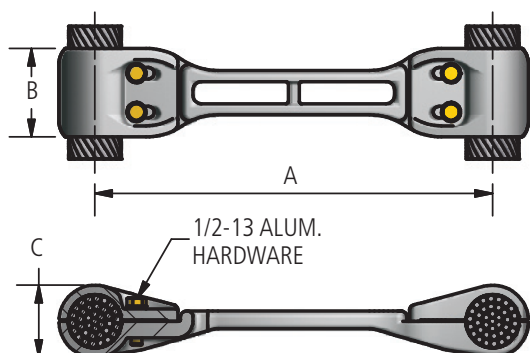
Two- and four-conductor spacers are designed to be corona free for 765 KV operation. Spacers are not recommended for use on transmission lines.

Material

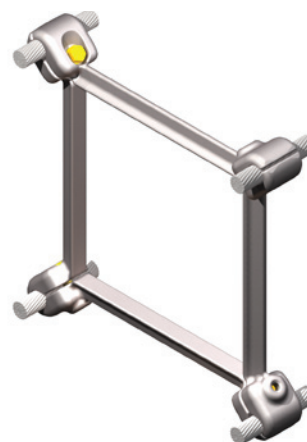
Aluminum Alloy

Hardware

Yellow anodized aluminum bolts, nuts, washers, lockwashers.



C6999-A



B7073

Ordering Information

CATALOG NUMBERS	STRAIN BUS	DIMENSIONS IN INCHES			NOMINAL WEIGHT LBS
		A	B	C	
C6999-A	2.4	18.00	4.00	3.25	6.4
C6999-B	2.311	17.72	4.00	3.25	6.4

CATALOG NUMBERS	CONDUCTOR SIZE			DIMENSIONS IN INCHES		NOMINAL WEIGHT LBS
	KCMIL	STRAND		A	B	
		AL.	ST.			
B7073-A	954.0	45	7	18.00	1.165	13.2
B7073-B	1351.5	45	7	18.00	1.385	12.4
B7073-C	795 MCM	36	6	18.00	1.026	13.2
B7073-D	556.5 MCM	26	7	18.00	0.927	13.6
B7073-E	1300 MCM	45	7	17.72	1.312	12.8
B7073-F	795 MCM	30	19	18.00	1.140	12.8
B7073-G	1431 MCM	45	7	10.00	1.379	9.6
B7073-H	1450 MCM	45	7	18.00	1.526	9.4

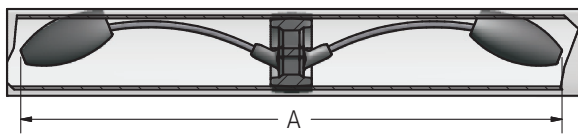
DOSSERT® TYPE 1705, B7384 Series

**Internal and External Bus Damper for Tubular Bus
Recommended for Voltages up to 765 kV**

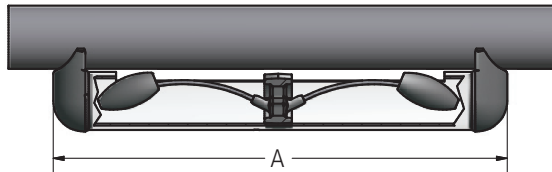
Internal bus damper is designed to be corona free for 765 kV operation. Damper is designed to be installed inside bus to be corona free and to present a "clean" appearance to the substation.

Material

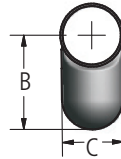
Aluminum Alloy and Galvanized Steel Damper Weights



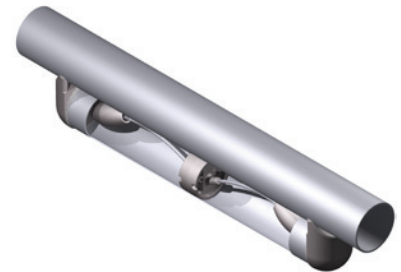
1705-XXX



B7384



1705



B7384-A

Ordering Information

INTERNAL DAMPER				
CATALOG NUMBER	CONDUCTOR SIZE TUBULAR BUS SPS & EHPS	DIMENSIONS IN INCHES	NOMINAL WEIGHT LBS	
		A	ALUM	TOTAL
1705-504	5 SPS	36.88	2.7	13.3
1705-576	6 EHPS	35.25	3.3	14.0
1705-607	6 SPS	35.25	4.0	14.7
1705-700	8" O.D. (1/2" Wall)	36.88	3.2	13.8
1705-725	8" O.D. (3/8" Wall)	36.88	3.2	13.8
1705-762	8 EHPS	36.88	3.3	13.9
1705-798	8 SPS	36.88	3.4	14.0

EXTERNAL DAMPER						
CATALOG NUMBER	CONDUCTOR SIZE TUBULAR BUS SPS & EHPS	DIMENSIONS IN INCHES			NOMINAL WEIGHT LBS	
		A	B	C	ALUM	TOTAL
B7384-A	5"	40.00	8.50	5.56	23.9	34.5
B7384-B	6"	40.00	10.12	6.62	28.9	39.5
B7384-C	8"	40.00	12.19	8.00	37.4	37.4

DOSSERT® TYPE B7004-A Series

Stud Connector, Straight, Stud to Two Conductor Bundle
Recommended for Voltages up to 765 kV

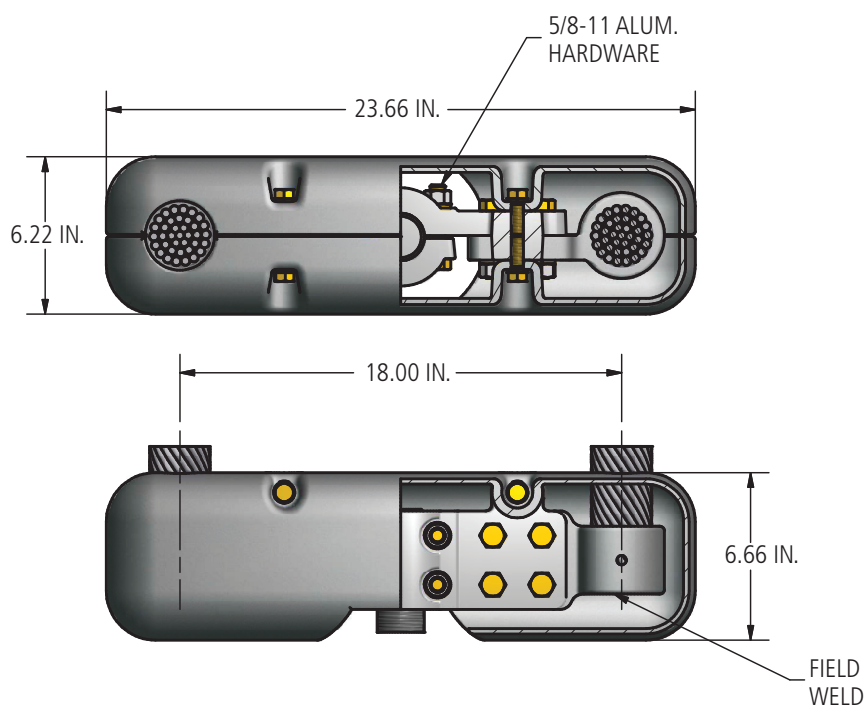
Stud connectors are designed to be corona free for 765 kV operation. Assembly consists of stud connector, two terminals, corona shields and hardware. Stud sizes other than those shown can be supplied if required.

Material

Aluminum Alloy

Hardware

Yellow anodized aluminum bolts, nuts, washers, lockwashers.



Ordering Information

CATALOG NUMBERS	STUD SIZE		CONDUCTOR SIZE	NOMINAL WEIGHT LBS
	DIAMETER	THREADS PER INCH	STRAIN BUS DIAMETER	
B7004-A	2	12	2.4	28.4
B7004-B	3	12	1.423	28.4
B7004-C	3	12	2.4	27.9
B7004-D	3.15	0	1.855	27.6

DOSSERT® TYPE B7074-A Series

Stud Connector – 45°, 90°, Stud to Two Conductors
Recommended for Voltages up to 765 kV

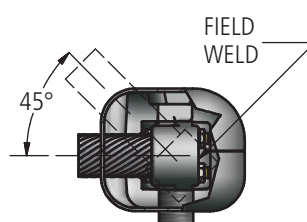
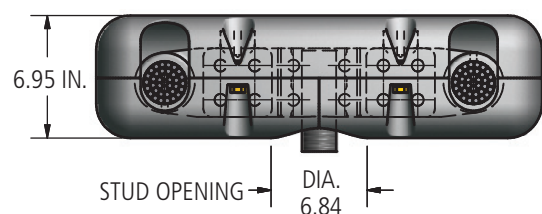
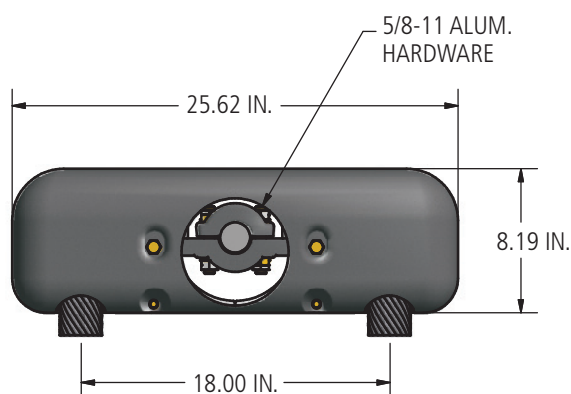
Angle stud connectors are designed to be corona free for 765 kV operation. Assembly consists of stud connector, two terminals, corona shields and hardware. Stud sizes other than those shown can be supplied if required.

Material

Aluminum Alloy

Hardware

Yellow anodized aluminum bolts, nuts, washers, lockwashers.



Ordering Information

CATALOG NUMBERS	STUD SIZE		CONDUCTOR SIZE		TERMINAL ANGLE	NOMINAL WEIGHT LBS
	DIAMETER	THREADS PER INCH	STRAIN BUS DIAMETER IN INCHES			
			MIN	MAX		
B7074-A	2	12	2.4		90°	33.0
B7074-B	2	12	2.4		45°	33.0
B7074-C	3	12	1.361	1.423	90°	33.4

DOSSERT® TYPE B7108-A Series

Stud Connector – 90°, Stud to Two Conductors
Recommended for Voltages up to 765 kV

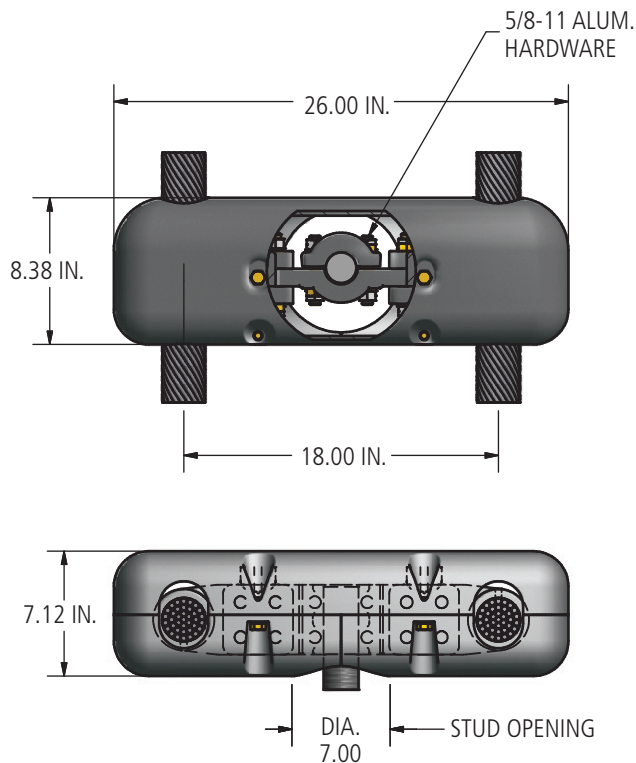
Thru stud connectors are designed to be corona free for 765 kV operation. Assembly consists of a stud connector, four terminals, corona shields and hardware. Stud sizes other than those shown can be supplied if required.

Material

Aluminum Alloy

Hardware

Yellow anodized aluminum bolts, nuts, washers, lockwashers.



Ordering Information

CATALOG NUMBERS	STUD SIZE		CONDUCTOR SIZE STRAIN BUS DIAMETER IN INCHES	NOMINAL WEIGHT LBS
	DIAMETER	THREADS PER INCH		
B7108-A	2	12	2.4	40.2

DOSSERT® TYPE B7879-A, B7880 Series

**Stud Connector, Straight, Stud to Three Conductor Bundle
Recommended for Voltages up to 765 kV**

Stud connectors are designed to be corona free for 765 kV operation. Assembly consists of stud connector, three terminals, corona shields and hardware. Stud sizes other than those shown can be supplied if required.

Material

Aluminum Alloy

Hardware

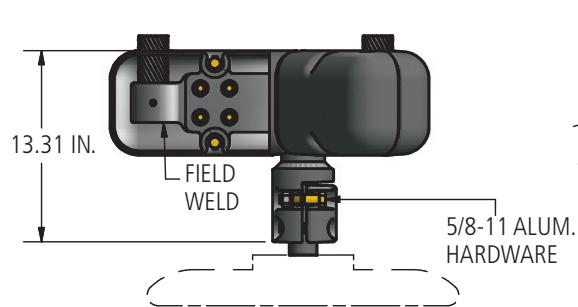
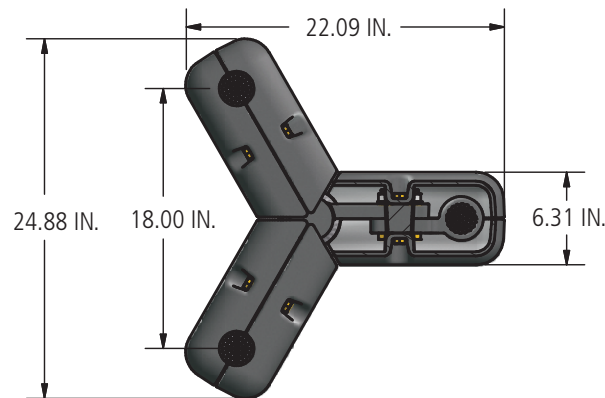
Yellow anodized aluminum bolts, nuts, washers, lockwashers.



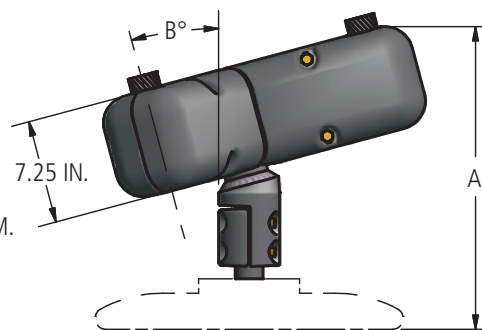
B7879-A



B7880-A



STRAIGHT CONNECTOR
B7879



ANGLED CONNECTOR
B7880

Ordering Information

CATALOG NUMBERS	STUD SIZE		CONDUCTOR SIZE STRAIN BUS DIAMETER IN INCHES	DIMENSIONS IN INCHES (FOR ANGLED STUD CONNECTOR ONLY)		NOMINAL WEIGHT LBS
	DIAMETER	THREADS PER INCH		A	B	
B7879-A	2	12	1.981 - 2.042	-	-	55.4
B7880-A	2	12	1.981 - 2.042	15.43	15°	56.2
B7880-B	2	12	1.981 - 2.042	17.8	45°	57.7

